

COMMUNITY IMPACT REPORT

2025



Plymouth Harbor Foundation


Mission

To develop and implement advancement and fundraising strategies that support the most positive aging experience possible for residents at Plymouth Harbor on Sarasota Bay.

Core Funds:

- ☛ Zest for Life
- ☛ Benevolence
- ☛ Fellowship





As we reflect on 2025, we are filled with gratitude for the steadfast generosity and shared vision that continue to shape Plymouth Harbor. This past year reaffirmed that our strength lies not only in our exceptional community of residents and team members, but also in the philanthropic spirit that fuels meaningful progress across our campus.

With every contribution, you helped advance programs and initiatives that enrich lives—supporting innovative care, expanding opportunities for team members, and enhancing the spaces that make Plymouth Harbor a uniquely vibrant place to live and work. The achievements highlighted in this Impact Report are, above all, a testament to what is possible when compassion and commitment come together.

We are especially proud of the continued growth of the Plymouth Harbor Foundation, whose investments in wellness, education, memory care, and employee support reflect our long-standing promise to care for one another. Your partnership ensures that we can meet today's needs while preparing thoughtfully for the future. This year, we also deepened our focus on initiatives that strengthen the resident experience and reinforce our commitment to excellence across all levels of service.

As we look ahead, we remain energized by the opportunities before us and inspired by the community that makes this work possible. Thank you for believing in our mission and for helping us build a legacy that endures for generations.

Warmly,



Jeff Weatherhead
Jeff Weatherhead

*President and CEO, Plymouth Harbor
Vice Chair, The Plymouth Harbor Foundation*



Chris Pfahler

Chris Pfahler, CFRE

*Vice President of Philanthropy
The Plymouth Harbor Foundation*

The Plymouth Harbor Foundation

MEMBER



Dr. Janette Albrecht



Alexandra Armstrong



Warren Bacon,
Chair



Marie Belcher



Natallia Dziatsel,
CFO



Kathy Hendricks



Rebecca Levy Sachs



Judith Schwartzbaum



Craig Steinhoff



Jeff Troiano



Jeff Weatherhead,
CEO

Board

CHARTER



Bill Johnston



Phil Starr



Cade Sibley



Tom Hopkins

STAFF



Chris Pfahler,
VP of Philanthropy

IMPACT BY THE

Numbers 2025



Dollars Raised
in 2025

TEAM MEMBER SCHOLARSHIPS

32

Team Members
and their children
awarded academic
scholarships

24

Named
Scholarships

\$126,294

Amount Awarded
in Scholarships

39

Camp
Experiences

11

Cultural Bridge
Grants

19

Participants in the
English Speakers of Other
Languages program

7

New MacNeil
Society Members

\$27,100

Dollars Raised for
Team Member
Hardship

\$80,684

Dollars Raised for
Zest for Life
Programming

\$278,598

Dollars Raised for
Zest for Life
Capital

Zest for Life

Programs

Our Purpose

Made possible through the support of the Plymouth Harbor Foundation, the Zest for Life programs provide forward-thinking initiatives designed to promote a dynamic and fulfilling quality of life for all who call Plymouth Harbor home.

The Impact of Your Support

Because of donors like you, Plymouth Harbor residents experience:

- Bringing uplifting music and reflection to the MacNeil Chapel.
- Delivering world-class performances through our year-round Premier Concert Series.
- Empowering team members with deeper understanding through Dementia Live training.
- Building connection through mix-and-mingle gatherings across all levels of living.
- Honoring service and sacrifice with our meaningful Veterans Day celebration.



Edmonia Lewis, Michelangelo, Moses (after Michelangelo), 1875, marble, 26 3/4 x 11 1/2 x 13 5/8 in., Smithsonian American Art Museum, Gift of Mr. and Mrs. Alfred T. Morris, Jr.



Edmonia Lewis, Young Octavian, ca. 1873, marble, 16 3/4 x 8 1/4 x 6 1/4 in., Smithsonian American Art Museum, Gift of Mr. and Mrs. Norman Robbins



Zest for Life *Programs*

Bringing Our Community Together

The Plymouth Harbor Premier Concert Series was created in 2022 and funded by an annual gift to The Plymouth Harbor Foundation from two very generous residents. The concert series features classically trained performing artists, locally and nationally, and offers a variety of ensembles and soloists. This concert series promises to connect our residents with many extraordinary artists who define our musical landscape today.



Dancing Into Each New Season

At the request of our residents, Plymouth Harbor introduced three new quarterly dance parties this year—joyful gatherings designed to get everyone moving, laughing, and reconnecting. Each event featured lively music, festive themes, and plenty of space for dancers of all abilities to join in. These parties quickly became resident favorites, offering not only a chance to dance but also to celebrate community, friendship, and the simple joy of being together. With such enthusiastic participation, these quarterly dances are poised to become a cherished Plymouth Harbor tradition.



Companions That Comfort

This year's Robo Pet Adoption Fair brought joyful connection and heartfelt moments to residents across our Memory Care Center, the Smith Care Center (SCC), and even parts of Independent Living. What began as a small initiative in memory care quickly grew as team members witnessed the comfort, calm, and engagement these lifelike pets inspired. Residents eagerly gathered to "adopt" dogs and cats that wag, purr, and respond to touch—offering companionship without the responsibilities of traditional pet care.

The fair expanded to the SCC, where the pets sparked smiles, storytelling, and spontaneous interaction among residents. A few Independent Living residents even joined in, discovering how these friendly robotic companions can brighten a room and lift spirits.

Supported by the Plymouth Harbor Foundation, the Robo Pet Adoption Fair continues to demonstrate the powerful impact of innovative, person-centered programming—bringing joy, connection, and meaningful engagement to residents across all levels of living.



Zest for Life Capital *Programs*

Our Purpose

Through the generosity of our donors, the Plymouth Harbor Foundation's Zest for Life Capital programs fund enhancements that strengthen, enrich, and preserve a vibrant quality of life for today's residents and generations to come.

The Impact of Your Support

Because of donors like you, Plymouth Harbor residents experience:

- Revitalizing the SCC activity room for greater engagement and connection.
- Enhancing outdoor comfort with refreshed veranda furniture.
- Renewing the Memory Garden as a peaceful space for reflection.
- Encouraging play and wellness with a new ping-pong table.
- Expanding access with a new low-vision reader in the library.
- Enriching Memory Care with a dedicated, resident-friendly library.



A Legacy of Love in the Smith Care Center

The Plymouth Harbor community is honored by the generous gift from Charles B. Eldridge to update the Smith Care Center Activity Room in loving memory of Jan "Mimi" Eldridge. Their thoughtful contribution revitalized this well-loved gathering space with upgraded audiovisual equipment and comfortable new furniture, creating a warm and engaging environment for residents. Thanks to the Eldridge family's meaningful tribute, the Activity Room now supports richer programming, deeper connection, and joyful moments that reflect Mimi's enduring spirit and the love she inspired.



Zest for Life Capital *Programs*

A Welcoming Retreat on the Veranda

Thanks to the generosity of Eric and Judy Mower, Plymouth Harbor's veranda now features refreshed, inviting furniture that has quickly become a cherished gathering spot. Families relax in the sunshine, enjoy the breeze, and share conversations that linger into the afternoon. Residents appreciate the comfort and beauty of the updated space. This enhanced outdoor setting encourages connection, warmth, and simple moments of happiness—



reflecting the spirit of community that the Mowers' thoughtful gift helps nurture every day.

A Garden of Comfort and Connection

The Memory Care Gardens at Plymouth Harbor has long been a place where residents and families find peace, beauty, and moments of meaningful connection. This year, thanks to the generosity of the Mattson Family, the garden underwent a thoughtful and heartfelt refresh that honors the importance of nature in supporting well-being and memory care.

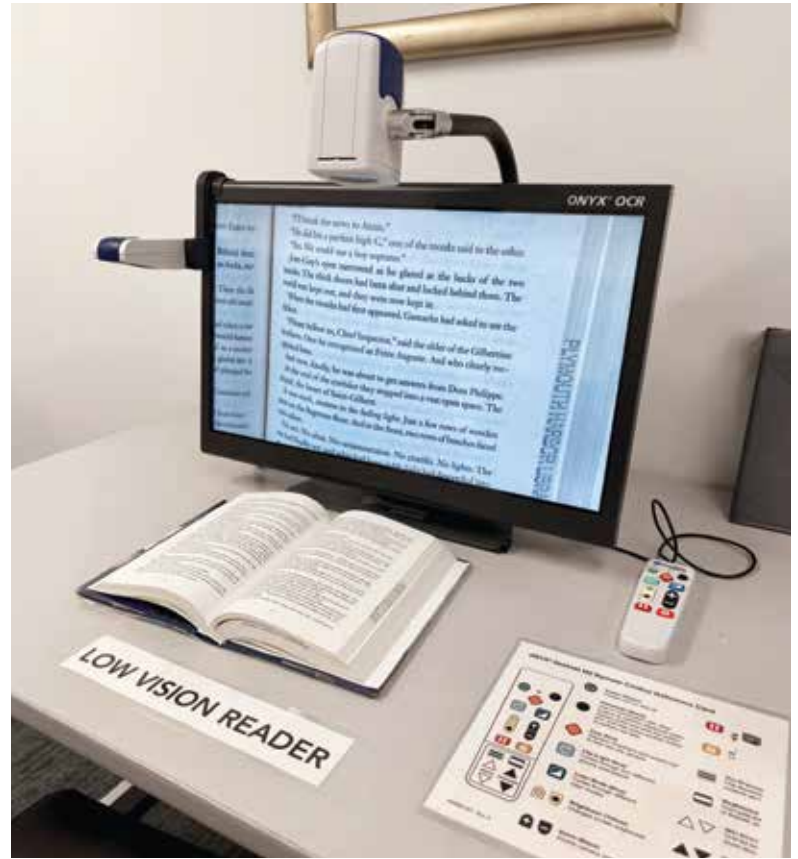
The Mattsons' gift revitalized the space with new plantings, inviting seating areas, and gentle music woven throughout the garden to calm, engage, and uplift residents. Color, texture, and fragrance were intentionally incorporated to spark engagement and offer sensory comfort to residents living with dementia.

Family members now enjoy spending time outdoors with residents in a setting that feels warm, safe, and full of life. The refreshed garden also provides team members with an uplifting environment to support therapeutic activities and gentle social interaction.

Through this generous investment, the Mattson Family has strengthened a cherished resource—one that nurtures calm, connection, and dignity for those who call our Memory Care Center home. Their gift ensures the garden remains a sanctuary filled with beauty, purpose, and the enduring power of nature.

Opening New Worlds Through Low Vision Support

Thanks to the generosity of the Wasserman Foundation, the Plymouth Harbor library now features a new Low Vision Reader, offering expanded access and independence for residents with visual impairments. This technology allows readers to enlarge text, enhance contrast, and enjoy books, documents, and personal materials with greater ease. The addition has already become an invaluable resource, empowering residents to stay engaged, informed, and connected. The Wasserman Foundation's thoughtful gift ensures that reading remains a joyful and accessible experience for all.



Team Member Assistance: *Scholarships*

Our Purpose

Thanks to the generosity of our donors, the Team Member Assistance Scholarship Fund provides team members—and their children—with opportunities to pursue higher education, gain new skills, and earn professional certifications. These investments not only strengthen individual growth but also enrich the quality of care and service that defines the Plymouth Harbor experience.

The Impact of Your Support

Because of donors like you:

- Empowering 21 team members and 11 children through academic scholarships.
- Supporting family growth with year-round camp scholarships.
- Advancing career pathways with CNA scholarships for four team members.
- Strengthening our future with two new endowed scholarships.
- Honoring generosity through the establishment of one new named scholarship.



Education is more important than ever, and we believe we can do more to help team members grow and succeed. By endowing this scholarship, we hope to encourage their educational pursuits and open doors to new opportunities for years to come. — Jack and Jane Kidd



The Plymouth Harbor Foundation 2025 Named Scholarships

James Arnsby Culinary and Hospitality Scholarship
Veronica Holak Barton Scholarship
Robert L. Boltuch and Family Scholarship *
Darlene J. and Richard P. Carroll M.D. Scholarship
Collinsworth Scholarship
Jeannette Gehrie Music Scholarship
Harry and Nancy Hobson Leadership Development Scholarship
Esther and Jorgen Jensen Scholarship
Dr. Herb and Maija Kaufman Scholarship
Jack and Jane Kidd Scholarship *
Ruth Kreindler Scholarship

Tom and Sallie Luebbe Scholarship
Mattson Family Scholarship
Marge Melun and Ky Thompson Scholarship
Plymouth Harbor Foundation Scholarships
Elsa Price Memorial Nursing Scholarship
Resident Association Scholarship
Margot and Jack Robinson STEM Scholarship
Sanders-Koenig Fund Shop Scholarship *
Elaine and Arthur Sandler Scholarship
Sam Seager Scholarship
Charleen Sessions Scholarship
Thomas W. and Marcia F. Ward Scholarship
Roger and Eleanor Weiss Scholarship

**New in 2025*

Team Member Assistance:

Scholarships

A Scholarship That Fuels a Young Chef's Dream

This year, the Plymouth Harbor Foundation proudly awarded the James Arnsby Culinary & Hospitality Scholarship to Moises Pina Gomez, a hardworking and passionate young team member whose dream is to become a professional chef. Moises's journey began in Venezuela, where his family faced political instability and limited opportunity. After immigrating to the United States in search of safety and a better future, Moises graduated high school and continued nurturing his love for cooking—an interest inspired by his father, who worked as a chef.

For Moises, culinary arts are more than a profession; they represent the chance to honor his family's sacrifices and build a meaningful future. The scholarship provides critical financial support as he pursues formal culinary training—an opportunity otherwise out of reach while his family navigates the asylum process. With this assistance, Moises can take the next steps toward earning his culinary credentials, developing his talent, and someday opening a restaurant of his own.

The scholarship, established in memory of James Arnsby, now carries forward a legacy of hospitality by empowering Moises to turn his aspirations into reality. Through this scholarship, James's generous spirit lives on—supporting Moises as he builds a future in the culinary arts and honoring a legacy rooted in service, family, and heartfelt connection.



Team Member Assistance:

Hardship

Our Purpose

Thanks to the generosity of our donors, the Plymouth Harbor Foundation's Hardship Fund provides vital support to team members experiencing unexpected financial strain.

The Impact of Your Support

Because of donors like you:

- Providing financial relief to 34 team members in times of unexpected need.
- Offering critical support for auto repairs, rental assistance, house fire recovery, medical challenges, and travel to funerals.



Standing Beside Our Team in Times of Need

Life's unexpected challenges can arrive without warning—whether through the loss of a loved one, a serious health crisis, or another unforeseen event that places emotional and financial strain on a family.

During these difficult moments, the Hardship Fund serves as a reliable lifeline for Plymouth Harbor's dedicated team members. Supported by the generosity of our donors, the fund provides essential assistance that eases immediate burdens and offers comfort when it is needed most.

Beyond financial relief, the Hardship Fund reinforces a powerful message: our team is never alone. Each grant reflects the compassion, respect, and gratitude we hold for those who care so deeply for our residents. By standing with team

members during their hardest days, we uphold the values that define the Plymouth Harbor community—kindness, dignity, and unwavering support.



Team Member Assistance:

Cultural Bridge Program

Our Purpose

The Cultural Bridge Program promotes understanding, communication, and inclusivity across Plymouth Harbor's diverse team. By strengthening cultural awareness and building shared connections, this initiative enhances teamwork and enriches the experience of both residents and staff.

The Impact of Your Support

Because of donors like you:

- Providing 11 grants to support team members on their Cultural Bridge journey.
- Covering essential immigration-related costs, including employment authorization, naturalization applications, permanent residency filings, and parole documentation.
- Launching our third ESOL class to strengthen communication and opportunity across our team.



Building Bridges Through Language

Plymouth Harbor proudly launched its third English for Speakers of Other Languages (ESOL) class this year as part of the Cultural Bridge Program, offered in partnership with the Literacy Council of Sarasota County. This program supports team members who are eager to strengthen their English skills, deepen connections, and feel more confident in their daily interactions. One of the most meaningful elements of this initiative is the involvement of resident tutors, who generously volunteer their time to support our team.

Laura, one of these dedicated tutors, works weekly with Wendy, a housekeeper. She often shares how grateful Wendy is for the classes, the one-on-one support, and how much it means to feel

truly seen and valued. Their conversations, lessons, and shared laughter have become a powerful reminder of what community looks like when people invest in one another.

With each new ESOL class, Plymouth Harbor continues to strengthen understanding, belonging, and opportunity across all levels of living.

Benevolence:

Resident Assistance

Our Purpose

Thanks to the generosity of our donors, the Benevolence Program provides support to Plymouth Harbor residents who have exhausted their financial resources due to unforeseen circumstances, ensuring they receive assistance with essential living expenses and medical needs.

The Impact of Your Support

Because of donors like you:

- Ensuring residents in need receive compassionate support when it matters most.
- Providing financial assistance that preserves dignity, stability, and peace of mind.
- Strengthening our community by offering a safety net built on generosity and care.



A Promise of Care, Upheld by Community

The Benevolence Fund stands as one of Plymouth Harbor's most cherished traditions—our promise that no resident will ever be asked to leave due to unforeseen financial hardship. Thanks to the generosity of donors, residents who have exhausted their resources receive assistance with essential living expenses and medical needs, ensuring stability, dignity, and peace of mind. The fund embodies the heart of our mission: neighbors supporting neighbors. Each contribution strengthens a compassionate safety net that protects the well-being of our community and honors the values on which Plymouth Harbor was built.



MacNeil *Society*

Honoring Legacy Through the MacNeil Society

The MacNeil Society recognizes and celebrates those who have chosen to support Plymouth Harbor through planned gifts, creating a legacy that will benefit residents for generations to come. These thoughtful commitments—whether through wills, trusts, or other estate plans—ensure that Plymouth Harbor continues to thrive with excellence, compassion, and vision. Members of the MacNeil Society play a vital role in sustaining programs, enhancing services, and strengthening the future of our community. Their generosity reflects a deep belief in our mission and a shared dedication to preserving the exceptional quality of life that defines Plymouth Harbor.



We chose to include the McNeil Society in our will because it strengthens the place we call home and ensures future residents will enjoy the same support and care we have.

— Esther and JJ Jensen

We honor and remember the MacNeil Society members who passed away in 2025. Their foresight and generosity continue to strengthen the Plymouth Harbor Foundation’s mission. May their lasting commitment—and the spirit with which it was given—remain a cherished part of their legacy.

Kathy Dombrowski

Winnie Downes

MacNeil Society Members

Anonymous

Janette S. Albrecht, M.D.

Alexandra Armstong

Tom and Marie Belcher

Robert L. Boltuch and Family

Christina Crowe

Robert W. and Gretchen J. Dawson

John* and Alida deJongh

Carl Denney and Winnie Downes*

Harold* and Kathy Dombrowski*

Aase Eriksen and Frederik Bredahl-Petersen*

Donald G. Fosselman

Dee Gaylord

Gary and Kathleen Hendricks

Harry and Nancy Hobson

Allen and Stephanie Hochfelder

Diane and Read Heydt

Henry* and Janet M. Jacobs

JJ and Esther Jensen

Susan Johnson

Betsy and Bill Johnston

Jack and Jane Kidd

Hild M. Kjeldbye

Ruth Kreindler

Thomas Landers

Dr. Sara J. Little and Barbara Shaver

Tom* and Sallie Luebbe

Vytas* and Gerda Maceikonis

Walt* and Gerry Mattson

Susan Lawrence Mauntel

Gary and Ann Olson

Ed and Elyse Rogers

Betsey W. Roberts

Christina K. Shantz

Jack* and Peg Smith

Phil and Barry Starr

Roy Truby and Golden Clifton

Tom* and Marcia Ward

*Deceased

Italics new in 2025

Our Generous *Donors*

January 1, 2025 – December 31, 2025

Anonymous (9)	Cubix, Inc.	Charles and Barbara Gitkin
Reina Jay Aavri Troiano	Nancy Curtis	Mrs. Otto J. Glasser
Martin* and Catha Abrahams	Sebastian Daga	Amanda Glidden
Janette Albrecht	Robert and Joan Dann	Laurie Goddard
George and Janet Allgair	Robert and Gretchen Dawson	Brian Gould
Mary Allyn	Carl Denney	Holly Hamilton
Jim and Pat Anderson	Judith Diedrich	Pat Harding
Alexandra Armstrong	Laura and Marshall Dinerman	Rob Harlan
Jasmin Arzola	Natallia Dziatsel	Gene Heide and Celia Catlett
Anthony and Laura Baffo	Chuck and Susan Eckert	Gary and Kathy Hendricks
Edward and Pam Baran	Charles B. Eldridge	Betty H. Hendry Revocable Trust
Roger and Phyllis Barry	Ed and Annette Eliasberg	Read and Diane Heydt
Beatrice J. Doheny Irrevocable Trust	Eluned and Edward Russell Charitable Foundation	Lacey Holland
Tom and Marie Belcher	Barbara Endrizzi	Allen L. Jennings and Judith M. Liersch
Bennett Contracting, Inc	Aase Eriksen	Jorgen and Esther Jensen
Jonathan and Kristina Berg	Estate and Trust of Harold R. Dombrowski and Kathryn A. Dombrowski	Susan Johnson
Judy Blair	Estate of Harriet Josenhans	Tom and Eva Johnson
Barbara Bock	Cesar Etayo	Betsy and Bill Johnston
Robert Boltuch	Margo Evans	Lenora Jost
Tom and Edy Bulthuis	Martin and Jane Faust	Keating Family Foundation
Debra Jacobs Buttaggi	Linda Finkelman and Leo Millstein	Jack and Jane Kidd
Slade and Susan Cargill	Joyce Fitzpatrick	Joslyn Kirkegaard
Darlene J. and Richard P. Carroll, MD	Don Fossleman	Ray Klausen and HR Nicholson
Cheney Brothers	Michael Fox and Marcella Schuyler	Susie Klingeman
Jill Considine	Functional Pathways	Ruslan Kozakov
Crowe Family Fund	Nick Giordano	Ruth Kreindler
Barbara Cruikshank		Arnold and Dolores Kropf

Montserrat Ladron de Guevara
Torre Sullivan*

Richard Lambrecht

William Lambrecht

Tom Landers

Monica Leahu

Justin Leathers

John Lenhart

Jean Lexton

Chris and Margo Light

Rafal Lis

Sara Little and Barbara Shaver

Sallie Ann Luebbe

Nancy Lyon

Tom and Mary Beth Magenau

Alexandra Maliwacki

Ronda Manasse

Elizabeth Martin

Stuart Matlins

Reverend Thomas Matthews

Mattson Family

George McGonagill

Joy McIntyre

Margaret Melun and Ky Thompson

Michael J. Looney, Inc.

Mildred and Bernard Doyle
Charitable Trust

Molly and Fred Moffat, M.D.

Eric and Judy Mower

Anthony Mullen

Karl and Ricky Newkirk

Louis E. Newman, DVM, Ph.D.

George Nimick

Gary and Ann Olsen

Taylor Ormrod

Sarah H. Pappas, Ed.D.

Steven Parsons

Kay Perrin

Kim Pestana

Chris Pfahler

Plymouth Harbor Residents
Association

Summer Rentsch

Richard M. Joseph and
Ann R. Friedman Family
Philanthropic Fund

Betsey Roberts and Will Lloyd

Ed and Elyse Rogers

Trisha Roman

Olena Romanek

Jerry and Dorothy Rosenberg

Bruce and Barbara Rosene

Gigi Rousseau

Derek Roy

Peter and Mary Ruggles

Ruth Carmichael Fund at the
Community Foundation of
Sarasota County

Jan Ryan

Franklin and Rebecca Sachs

Frank and Marsha Samponaro

Karen Sanson

Molly Schechter

Kenneth and Jane Schermer

Brian and Marcia Schiff

Marilyn Schwartz

Judith Schwartzbaum

Samuel Seager

Denys Semeniuk

Estelle Silbert

Elizabeth and Jay Sparr

Sergii and Nataliya Susha

The Elsie A. Dreffein Charitable Trust

The Fairbairn Family Foundation

The Wasserman Foundation

Bob and Penny Thomas

Tom and Carol Beeler Foundation

Guy Tomsyck

Jeffrey Troiano

Franco Valencia

Beverly Vernon

Candice Villafana

Iwona Waliczek

Marcia Ward

Jeff and Leslie Weatherhead

Sandy Weis

Roger Weiss

William Stark Jones Foundation
through Tom Landers

Carol Williams

Pauline Wittenberg

Beverly Wright

Roger and Jan Young

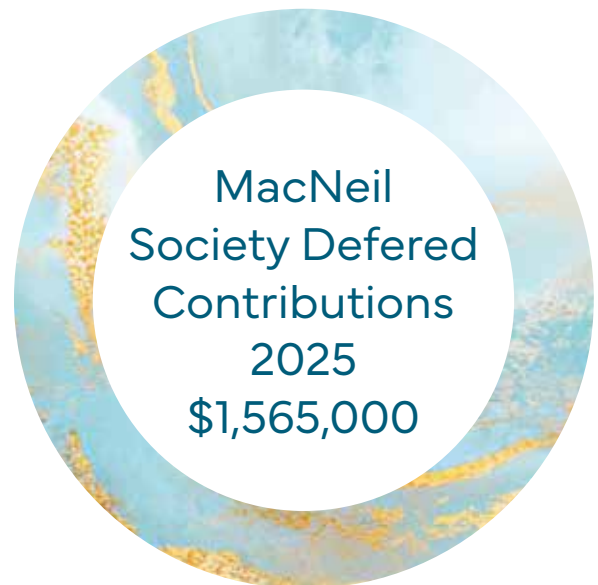
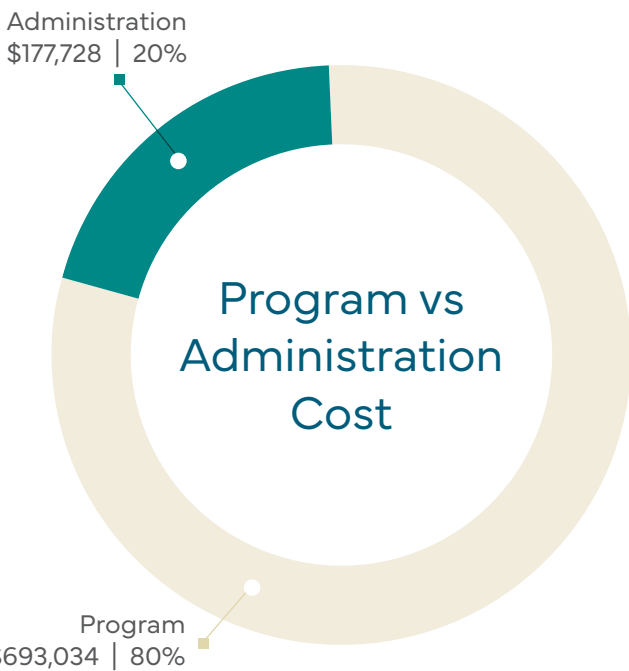
*Deceased

The Plymouth Harbor Foundation

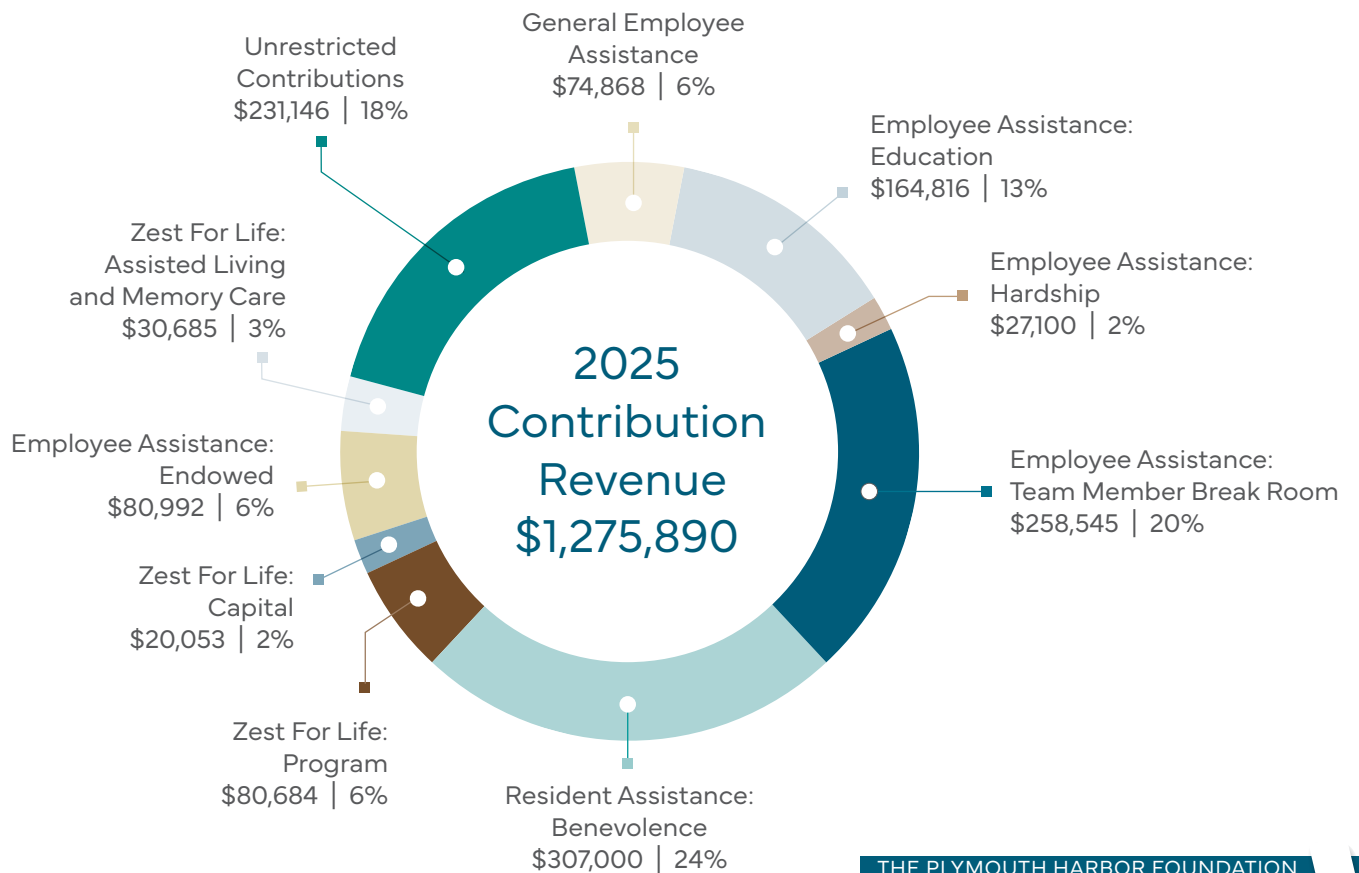
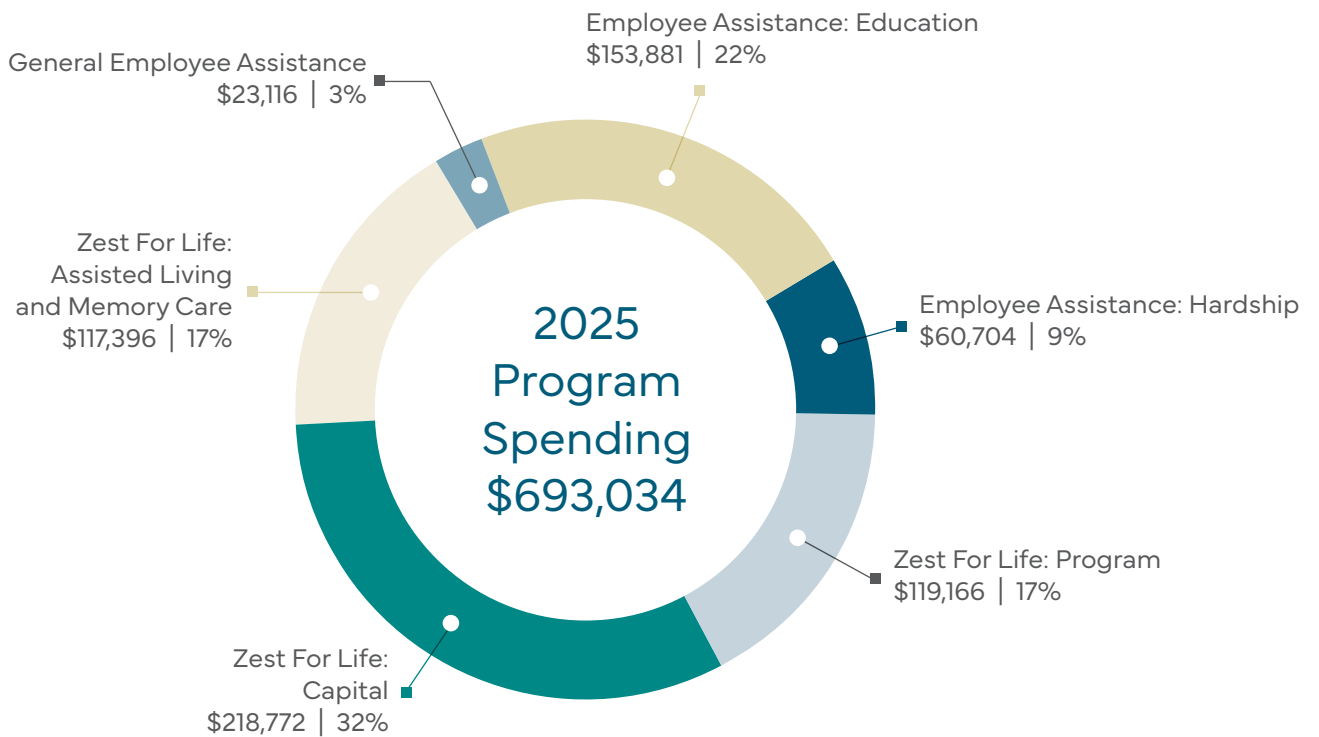
Statement of Operations

For the period January 1, 2025 through December 31, 2025

	Without Donor Restriction	With Donor Restriction	Total
Revenues:			
Contributions	\$ 231,146	\$ 1,044,743	\$ 1,275,889
Net investment return	1,072,650	39,472	1,112,122
Total revenues	1,303,796	1,084,214	2,388,011
Total net assets released from restrictions	284,843	(284,843)	-
	<u>1,588,639</u>	<u>799,371</u>	<u>2,388,011</u>
Expenses:			
Program	693,034	-	693,034
Management and general	177,728	-	177,728
Total expenses	870,762	-	870,762
	<u>870,762</u>	<u>-</u>	<u>870,762</u>
Increase (decrease) in net assets	717,877	799,371	1,517,249
Net assets, beginning	2,999,860	4,165,993	7,165,853
Net assets, ending	\$ 3,717,737	\$ 4,965,364	\$ 8,683,102
	<u>\$ 3,717,737</u>	<u>\$ 4,965,364</u>	<u>\$ 8,683,102</u>



Financials





The Plymouth Harbor
FOUNDATION

700 John Ringling Blvd. • Sarasota, Florida 34236
941-361-7398 | Giving@plymouthharbor.org

A Not-For-Profit Continuing Care Retirement Community (CCRC) / OIR #88039 • SNF License# 1449096 • License # AL/MC4692

